

# COMMUNITY CIRCLE

The Mabry's whole life circled around community. See if you can find these circles that helped Ed and Lizzie bring their community together.

*Check off the ones you find.*

## Waterwheel

Powered the whole mill.



## Wagon Wheel

Ed was excellent at repairing wagon wheels. Wagons were the main transportation in the community.



## Millstone

Used to grind community corn into flour, grits, and chop.



## Cog Wheel

Many of these were required to make the mill machinery work. Just like every member of a community, every cog was important to make the mill run.



## CIRCLE BACK

Mabry Mill is one of the most photographed spots on the Blue Ridge Parkway. Take your own photo so you can remember the time you spent here!



**TRACK** your hike at

[kidsinparks.com](http://kidsinparks.com)

and get **FREE** prizes!



Visit our website to find more TRACK Trail™ adventures near you!

Thanks for joining us on the trail today!



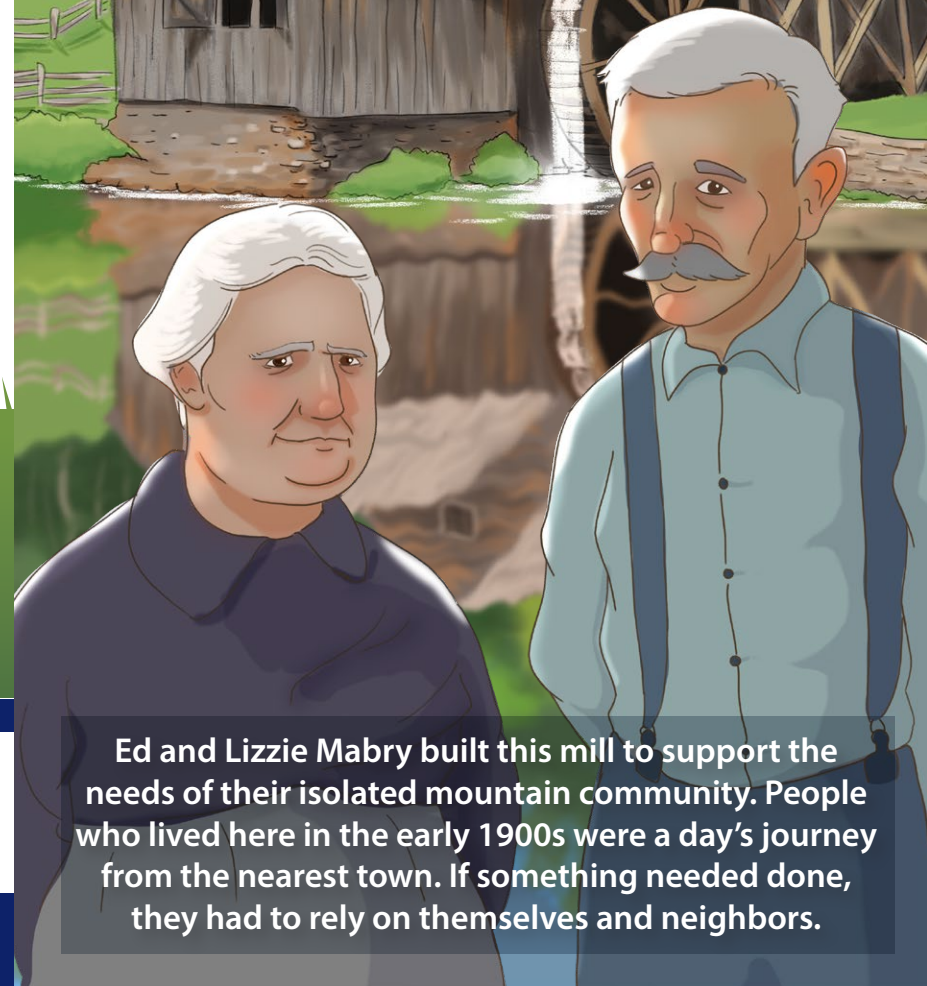
Follow us on Facebook!



Kids in Parks Founding Partners



# MABRY MILL



Ed and Lizzie Mabry built this mill to support the needs of their isolated mountain community. People who lived here in the early 1900s were a day's journey from the nearest town. If something needed done, they had to rely on themselves and neighbors.

# THE COMMUNITY MILL

Mabry Mill was used for grinding corn as well as sawing lumber. Let's discover some of the ways the mill provided for the community.

## HELP FROM NEIGHBORS

The Mabrys built a lot by themselves, but needed help constructing the waterwheel. It powers the entire mill and had to be perfect. Luckily one of their skilled neighbors offered help.

The wheel is made of white oak, a local hardwood tree known for its water resistance.

## Can you find a white oak?

check the box

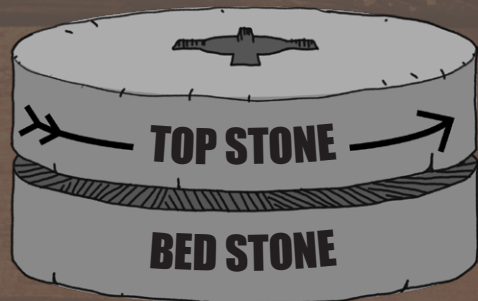
leaf



acorn

## MILLSTONES MILES AWAY

The waterwheel drives the mill but millstones do the grinding work. These millstones came from about 45 miles away and Ed chiseled the grinding faces himself.

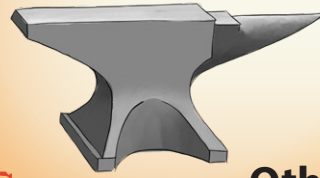


## STRIKE WHILE THE IRON'S HOT

With the success of the mill, Ed thought of other ways to provide services for the community. He set up a blacksmith shop to make metal products.

Can you find these tools?

Anvil



Hammer



Other: \_\_\_\_\_

## "NOSE TO THE GRINDSTONE"

Too much water on the waterwheel spins the millstones too quickly. This builds heat and can burn the corn. To check for scorching, millers put their nose down close to the grinding and sniffed for the smell of burning.

Press your hands together and rub them slowly. Now rub them as fast as you can. Which speed makes your hands hotter?

**SLOW** or **FAST**

Mabry Mill ground slowly, never scorching the corn. The Mabrys were known for the best tasting cornmeal in the area.

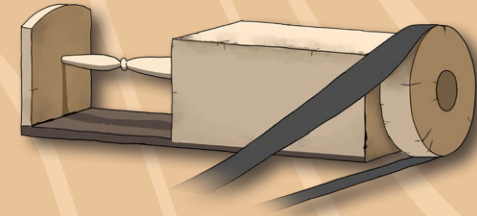
How fast is the waterwheel turning? Pick one spoke and count how many full turns it does in one minute.

turns per minute

## SAWMILL & WOODWORKING SHOP

The waterwheel also powered the sawmill. When the Mabrys lived here there were no electric tools. All the tools needed for community lumber products were powered by the turning wheel. Can you find these tools around the mill?

Circular Saw  
Cuts logs into board lumber.



Lathe

Turns wood for making table legs or wagon wheel spokes.

Other tools: \_\_\_\_\_

## A GROWING COMMUNITY

Mabry Mill brings together millions of people from around the world. You may hear different accents or languages and see different styles of clothing. Look at license plates in the parking lot. Which states and countries can you find?