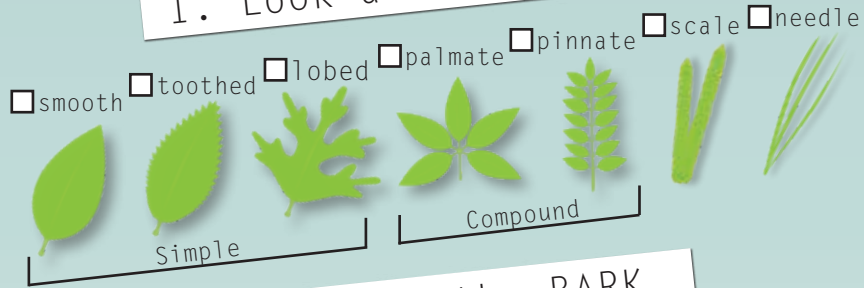


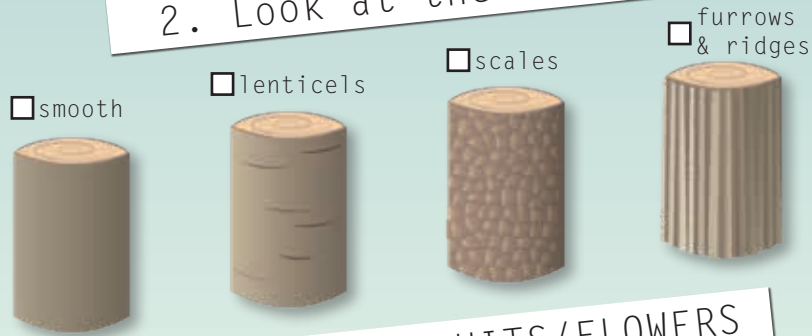
# TREE KEY

The leaves, bark, fruits, flowers, and tree shape can help us identify trees. Gather clues from trees and use a book to identify them.

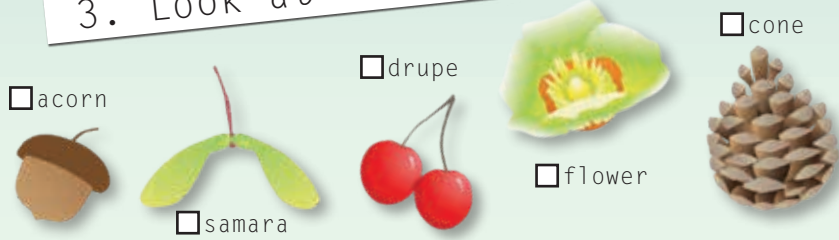
## 1. Look at the LEAVES



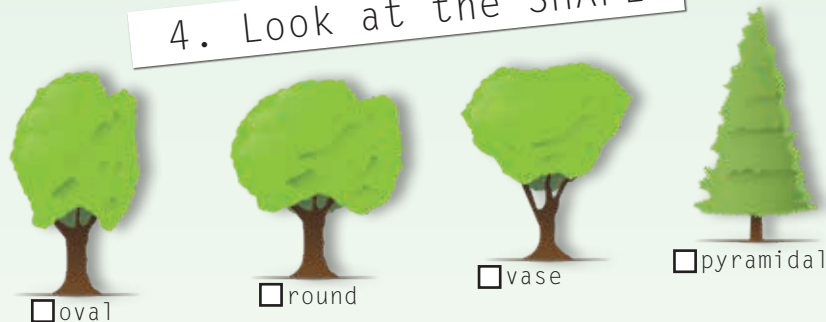
## 2. Look at the BARK



## 3. Look at the FRUITS/FLOWERS



## 4. Look at the SHAPE



TRACK your hike at

[kidsinparks.com](http://kidsinparks.com)

and get **FREE** prizes!



Visit our website to find more TRACK Trail adventures near you!



Thanks for joining us today!

Follow us!



Kids in Parks is a program of the



# TYPES OF TREES



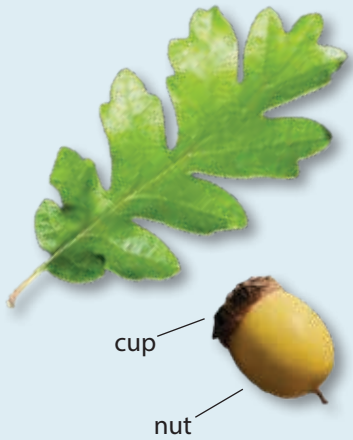
Hi, I'm TRACK!  
It's easy to get confused by all the different types of trees out there. Thankfully, there are clues that can help us tell one tree from another.

Use this guide to identify and learn about several types of trees in the area.

# BROAD LEAF

are often deciduous trees with wide, flat leaves that change color in the fall before shedding. These trees have leaves with smooth or toothed edges and prominent veins. They produce fruits like acorns, nuts, or berries, which hold their seeds. As they age, their bark becomes rough or ridged.

*Can you find these broad-leaf trees?*



## OREGON WHITE OAK

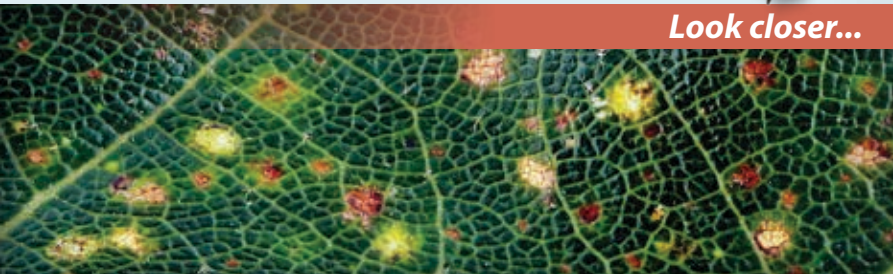
- 5-9 rounded lobes
- Oval acorn with shallow cup
- Light gray bark, furrowed checker pattern in older trees
- Dull red-brown leaves in fall

## BIGLEAF MAPLE

- 5 lobes with deep notches
- Very large leaves
- Green, "hairy" samaras
- Deep yellow leaves in the fall
- Red-brown, deeply ridged bark



*Look closer...*



# SCALE LEAF

are evergreen trees with small, overlapping scale-like leaves that form tight clusters along their branches. These leaves give the tree a dense, soft appearance. They produce cones that contain seeds, which are dispersed by the wind. As this type of tree matures, the reddish or gray bark becomes fibrous and stringy.

*Can you find these scale-leaf trees?*



## WESTERN RED CEDAR

- Dark green overlapping scales
- Close rosebud-shaped cones
- Cones open into papery petals
- Peeling, stringy red-brown bark

## WESTERN JUNIPER

- Gray-green overlapping scales
- Thick, often bent/twisted trunks
- Cones look like blue berries
- Brown-red, stringy peeling bark on mature trees



*Look closer...*



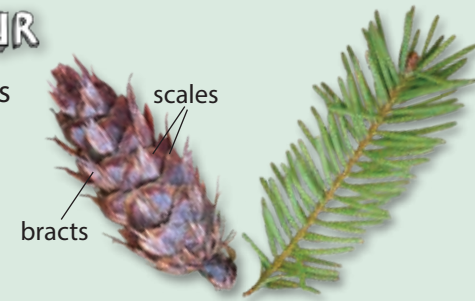
# NEEDLE LEAF

are evergreen trees with narrow, elongated, needle-like leaves. The leaves can be grouped in clusters or singular and have a waxy coating to reduce water loss. They produce cones, which contain seeds. The bark of younger trees is typically smooth, but as they age, it becomes rough.

*Can you find these needle-leaf trees?*

## DOUGLAS FIR

- Soft, round-tipped needles
- Cones have three-pointed bracts on the scales
- Gray bark, with deep brown furrows



## SITKA SPRUCE

- Stiff, sharp blue-green needles
- Narrow cones with paper-thin scales
- Thin, gray, scaly bark

## PONDEROSA PINE

- Bundles of three, long needles
- Longer, egg-shaped cones (3-5 in.) with sharp umbos
- Yellow to red bark with large plates



*Look closer...*

